

HPE GREENLAKE FOR VDI

Enable secure remote work with scalable, pay-per-use VDI



REMOTE WORK IS THE NEW WORKPLACE REALITY



The current health crisis has rapidly accelerated the move to remote work—likely for the long haul. Sample this: By the end of 2022, the share of knowledge workers working remotely will increase to 47%, up from 27% in 2019.¹

VDI OFFERS A PROVEN APPROACH TO REMOTE WORK



With virtual desktop infrastructure (VDI), employees do not need to store confidential company data on a personal device that could easily be lost, stolen, or tampered with.



It's a great way to empower remote workforce in healthcare (pop-up clinics and telemedicine), education (distance learning), manufacturing, and other sectors.

BUT THERE ARE BARRIERS TO DELIVERING A GREAT VDI EXPERIENCE



High up-front costs—new hardware and software with continual capital expenditure and budget requests

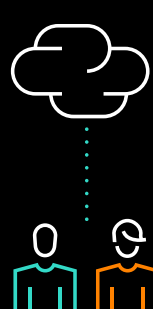


Longer time to value as new infrastructure must be requested every three to five years and implemented over time—the solution does not grow in real time with demand



Resources spend time designing, procuring, building, and operating the entire stack rather than focusing on more strategic initiatives

HPE GREENLAKE FOR VDI RESETS THE VIRTUAL DESKTOP OPPORTUNITY



- Choose from a range of predefined virtual desktops in any combination.
- HPE provides the rest—the hardware, software, operational services, and installation or configuration—and maintains the solution.
- Pay only for what you use via a pay-per-use,² per-month billing.

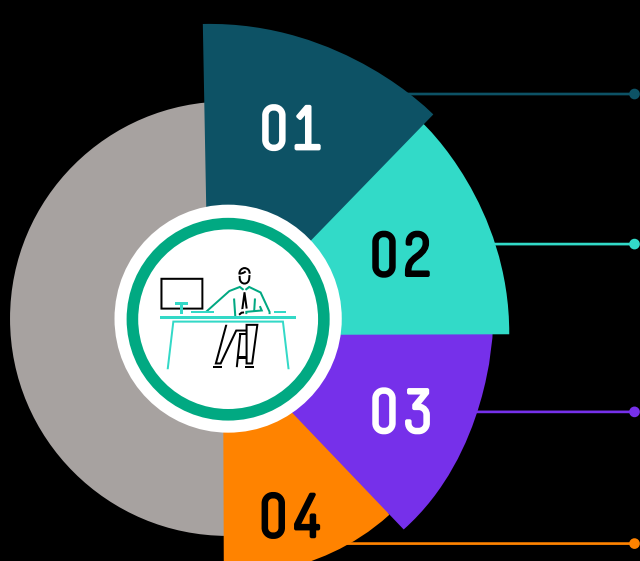
THE RIGHT COMPONENTS CAN MAKE ALL THE DIFFERENCE



- Delivers the security, performance, and compliance benefits of an on-premises VDI solution with the simplicity and flexibility of the cloud.
- HPE supports, operates, and manages the platform to deliver a strong performance and reliability while you retain full control of the crucial desktop and application environment.
- Designed to suit both Citrix and VMware®, and uses NVIDIA® GPUs for more demanding workloads.

TAILORED DESKTOP OPTIONS FOR DIFFERENT USER WORKLOADS

Choose from a mix of user types based on your needs:



01 Task workers who typically use a small number of low compute-intensity applications

02 Knowledge workers with predominant use of office productivity applications and browsing

03 Power users who need more intensive use of office applications, mid-level graphics, or development platforms

04 Engineering professionals with intensive graphics requirements for computer-aided design (CAD)-type applications or financial multiscreens

FIVE REASONS WHY THIS SOLUTION IS A GREAT FIT FOR YOUR IT STRATEGY IN THE NEW NORMAL

1

Time to value



Avoid lengthy rollouts with quick-to-deploy, preconfigured, turnkey solutions

2

Economics



Delivered as a service with a monthly bill per user

3

Scalability



Respond quickly to changing business needs with seamless scalability

4

Compliance



Workloads stay on-premises, offering enhanced control

5

Performance



Solves the distance dilemma



GETTING STARTED WITH HPE GREENLAKE FOR VDI IS EASY

- Start with a one-day, virtual, and collaborative VDI workshop
- Define a solution to meet your needs
- Get the infrastructure in your data center or colocation facility
- Scale seamlessly to meet evolving demands

Hop aboard the next normal and power new ways of working with HPE GreenLake for VDI. Gain on-premises VDI with cloud-like economics and scalability.

EMPOWER YOUR DIVERSE REMOTE WORKFORCE

Power new ways of working with virtual desktop infrastructure (VDI). HPE GreenLake for VDI offers inherently secure on-premises VDI tailored to your needs, that lets you avoid high up-front costs, speed time to value, and scale seamlessly to align resources with demand. **Enable secure remote work with scalable, pay-per-use VDI.**

LEARN MORE AT

hpe.com/us/en/greenlake/vdi.html

¹ Gartner®, Forecast Analysis: Remote and Hybrid Workers, Worldwide, Ranjit Atwal, Rishi Padhi, Namrata Banerjee, Anna Griffen, June 02, 2021

² Above a reserve

© Copyright 2022 Hewlett Packard Enterprise Development LP. The information contained herein is subject to change without notice. The only warranties for Hewlett Packard Enterprise products and services are set forth in the express warranty statements accompanying such products and services. Nothing herein should be construed as constituting an additional warranty. Hewlett Packard Enterprise shall not be liable for technical or editorial errors or omissions contained herein.

NVIDIA is a trademark and/or registered trademark of NVIDIA Corporation in the U.S. and other countries. VMware is a registered trademark or trademark of VMware, Inc. and its subsidiaries in the United States and other jurisdictions. GARTNER is a registered trademark and service mark of Gartner, Inc. and/or its affiliates in the U.S. and internationally and is used herein with permission. All rights reserved. All third-party marks are property of their respective owners.